



MARIEL
by Kirsten Joel

www.kirstenjoel.com

DESIGN INFORMATION

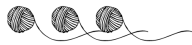
Mariel is a hip-length pullover featuring a vine lace stitch pattern on the body and sleeve cuffs. The front, back, and sleeves are all worked in pieces from the bottom up, and seamed. Finally, stitches are picked up around the neck opening for an easy Stockinette st neck trim.

The sample is knit with De Rerum Natura Robinson, a wool & cotton light worsted weight yarn, making it a great three-season pullover. Wear it this spring with chic linen pants, flirty skirts, and light-wash jeans. This summer, throw it in your beach bag as a great layer over your suit as the sun sets. And this winter, remember these perfect spring & summer days with Mariel layered under your coat.

This delicate lace stitch goes bold with the worsted-weight yarn and modern fit. With drop shoulders and comfortable positive ease, Mariel will be a perfect addition to your handmade wardrobe.

Please share your progress on Instagram by tagging me @kirstenjoel_designs and using the hashtag #marielpullover. I love to see all of your WIP and finished projects!

SKILL LEVEL



FINISHED MEASUREMENTS

Sizes (1, 2, 3) [4, 5, 6] (7, 8, 9) [10, 11, 12] with Finished Chest Measurements (38, 42, 46) [50, 54, 58] (62, 66, 70) [74, 78, 82]" to fit (26, 30, 34) [38, 42, 46] (50, 54, 58) [62, 66, 70]" chest; designed to fit with 10 - 12" positive ease.

Sample shown is size 3, worn on 34" chest with 12" positive ease.

YARN

De Rerum Natura Robinson - Heavy DK/Light Worsted weight; 70% Organic Merino Wool and 30% Recycled Cotton; 270 yards (250 meters) / 100 g (3.5 oz)
(3, 3, 4) [4, 4, 5] (5, 5, 6) [6, 6, 7] skeins, photographed in barbe a papa
or ~ (658, 722, 792) [876, 949, 1018] (1105, 1186, 1275) [1353, 1439, 1523] yards of a worsted weight merino/cotton blend yarn

GAUGE

18 sts and 26 rows = 4" over St stitch with gauge needles, blocked

18 sts and 24 rows = 4" over Vine lace stitch with gauge needles, blocked

NEEDLES

US 6 / 4 mm 32" circular needles, or size to obtain gauge

US 5 / 3.75 mm 24" circular needles, or one size smaller than gauge needle, for neckband

Note: A circular needle is used to accommodate the number of stitches for the body and neckband. Fronts, Back and Sleeves are worked in pieces.

TOOLS

Locking stitch markers (5), tapestry needle, blocking wires, blocking pins.

HELPFUL LINKS

For help with the following techniques, visit the following links:

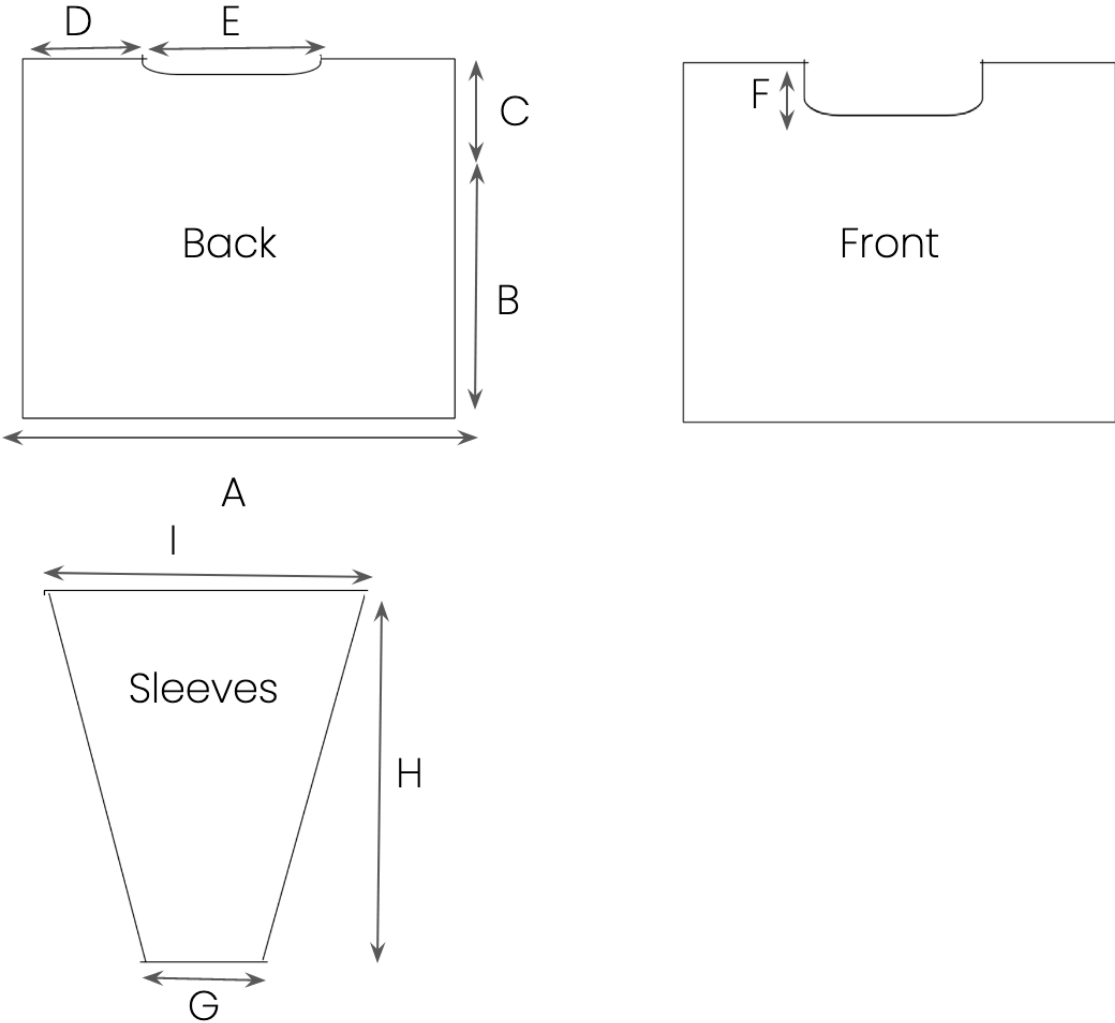
[Swatching](#)

[Blocking](#)

[Picking Up Stitches](#)

[Mattress Stitch](#)

SCHEMATIC



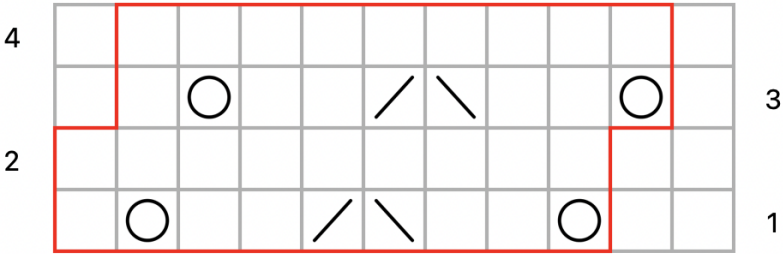
SCHEMATIC CHART

Measurements in Inches		1	2	3	4	5	6	7	8	9	10	11	12
A	Front/Back Width	19	21	23	25	27	29	31	33	35	37	39	41
B	Hem to Armhole Length	13 ½	13 ½	13 ½	13	13	12 ¾	12 ¼	11 ¾	11 ¼	11	10 ¾	10 ¼
C	Armhole Depth	5 ½	5 ¾	6	6 ¾	7	7 ½	8 ¼	9	9 ¾	10 ¼	10 ¾	11 ½
D	Shoulder Width	5 ½	6 ¼	7 ¼	8	9	10	10 ¾	12	12 ¾	13 ¾	14 ½	15 ½
E	Neck Opening	8 ¼	8 ½	8 ¾	9	9 ¼	9 ½	9 ¾	9 ½	9 ¾	9	10	10 ¼
F	Front Neck Depth	3 ¼	3 ¼	3 ¼	3 ½	3 ½	3 ½	4	4	4	4 ¼	4 ¼	4 ¼
G	Wrist Circumference	7 ½	8	8 ¼	8 ¾	9	9 ½	10	10 ¼	10 ¾	11	11 ½	12
H	Sleeve Length	17	16 ½	16 ½	16 ½	16 ½	15 ½	15 ½	15	15	14 ½	14 ½	14
I	Upper Arm Circumference	11 ½	11 ¾	12 ¼	13 ½	14 ¼	15	17	18 ¼	19 ½	20 ¾	21 ½	23






STITCH PATTERN

CHART INSTRUCTIONS

VINE LACE (multiple of 9 sts + 2)



Key

-  RS: knit
WS: purl
-  yo
-  RS: ssk
WS: ssp
-  RS: k2tog
WS: p2tog
-  Repeat

WRITTEN INSTRUCTIONS

VINE LACE (multiple of 9 sts + 2)

Row 1 (RS): K2, *yo, k2, ssk, k2tog, k2, yo, k1; rep from * to end

Row 2 (WS): Purl to end

Row 3: K1, *yo, k2, ssk, k2tog, k2, yo, k1; rep from * to last 1 st, k1

Row 4: Rep Row 2

Rep Rows 1 - 4 for pattern



kirstenjoel.com
All text, images, & illustrations ©2023 Kirsten Joel
For personal use only



ABOUT THE DESIGNER

Originally from Los Angeles, Kirsten moved to Charleston, SC with her husband Jason and quickly planted roots with a group of girlfriends and started her family. She strongly believes in designing knit patterns that are portable, meditative, and quietly sophisticated. Her designs allow you to be present for all of life's little moments and create finished pieces that will quickly become wardrobe staples. She loves working with wool, silk, cotton, and linen in classic, neutral colors.

CREDITS

Tech Editing: Chaitanya Muralidhara

CONTACT

A lot of hard work goes into ensuring these patterns are simple to understand and error free. If you get stuck, need extra guidance, or think there may be an error please email hello@kirstenjoel.com and I will connect with you as soon as I can.

SUBSCRIBE

Enjoyed this pattern? [Subscribe to my newsletter](#) to be the first to know when new designs are launched. I'll also send helpful tips & techniques so that you can connect with your craft and make the most of your knitting practice.

YOU MIGHT ALSO LIKE...



RODANTHE
cardigans



SISTER PEPLUM RINCON CAFTAN
tops



cardigans

kirstenjoel.com

All text, images, & illustrations ©2023 Kirsten Joel
For personal use only