



AVALANCHE

by Kirsten Joel

www.kirstenjoel.com

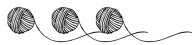
DESIGN INFORMATION

Avalanche is a circular cowl worked in two stitch patterns - a perfect combination of texture and lace. The cowl is worked flat, back and forth in rows, and seamed once the desired length is achieved.

The sample is knit with Blue Sky Fibers Extra, an aran weight 55% alpaca and 45% merino wool yarn, in the color Butter Cream.

Please share your progress on instagram with #avalanchecowl

SKILL LEVEL



FINISHED MEASUREMENTS

Finished Cowl Measurements 14" wide by 66" long

YARN

Blue Sky Alpaca Extra - Aran weight, 55% Alpaca, 45% Merino Wool; 218 yards (199 meters) / 150 g (5.3 oz)

2 skeins, photographed in Butter Cream

Or ~ 436 yards of an aran weight wool yarn

GAUGE

12 sts and 32 rows = 4" over Texture stitch with smaller needles, blocked

12 sts and 24 rows = 4" over Lace stitch with larger needles, blocked

NEEDLES

US 9 / 5.5 mm 24" circular needles, or size to obtain gauge

US 8 / 5 mm 24" circular needles, or size to obtain gauge

TOOLS

Tapestry needle, blocking wires, blocking pins.

kirstenjoel.com

All text, images, & illustrations ©2023 Kirsten Joel

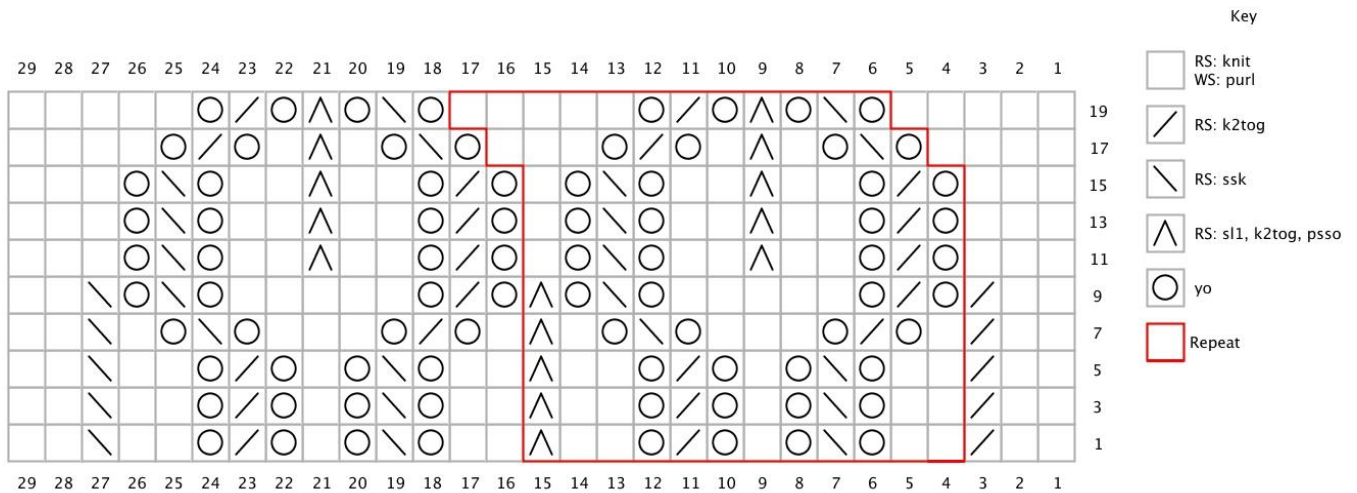
For personal use only



CHART INSTRUCTIONS

TRELLIS LACE STITCH (multiple of 12 sts + 17)

*Note: All WS rows are worked as K1 * purl to last st, k1*



kirstenjoel.com

All text, images, & illustrations ©2023 Kirsten Joel
For personal use only

WRITTEN INSTRUCTIONS

TEXTURE STITCH (multiple of 2 sts + 3)

Set Up Row (RS): Knit

Set Up Row (WS): K2 *p1, k1; rep from * to last st, k1

Rows 1, 3, 5, 7 (RS): K1 *K1 below, p1; rep from * to last 2 sts, k1 below, k1

Rows 2, 4, 6 (WS): K2 *p1, k1; rep from * to last st, k1

Rows 8, 10, 12: K1 *p1, k1; rep from * to end

Row 9, 11, 13: K1 *p1, k1 below; rep from * to last 2 sts, p1, k1

Row 14: Same as Row 2

Rep Rows 1 - 14 for pattern

LACE TRELLIS STITCH (multiple of 12 sts + 17)

Rows 1, 3, 5 (RS): K2, k2tog, *k2, yo, ssk, yo, k1, yo, k2tog, yo, k2, SK2P ; rep from * to last 13 sts, k2, yo, ssk, yo, k1, yo, k2tog, yo, k2, ssk, k2.

Row 7: K2, k2tog, *k1, yo, k2tog, yo, k3, yo, ssk, yo, k1, SK2P ; rep from * to last 14 sts, k1, yo, k2tog, yo, k3, yo, ssk, yo, k1, ssk, k2.

Row 9: K2, k2tog, *yo, k2tog, yo, k5, yo, ssk, yo, SK2P ; rep from * to last 14 sts, yo, k2tog, yo, k5, (yo, ssk) × 2, k2.

Rows 11, 13, 15: K3, *yo, k2tog, yo, k2, SK2P, k2, yo, ssk, yo, k1 ; rep from * to last 14 sts, yo, k2tog, yo, k2, SK2P, k2, yo, ssk, yo, k3.

Row 17: K4, *yo, ssk, yo, k1, SK2P, k1, yo, k2tog, yo, k3 ; rep from * to last 13 sts, yo, ssk, yo, k1, SK2P, k1, yo, k2tog, yo, k4.

Row 19: K5, *yo, ssk, yo, SK2P, yo, k2tog, yo, k5 ; work from *, yo, ssk, yo, SK2P, yo, k2tog, yo, k5.



ABOUT THE DESIGNER

Originally from Los Angeles, Kirsten moved to Charleston, SC with her husband Jason and quickly planted roots with a group of girlfriends and started her family. She strongly believes in designing knit patterns that are portable, meditative, and quietly sophisticated. Her designs allow you to be present for all of life's little moments and create finished pieces that will quickly become wardrobe staples. She loves working with wool, silk, cotton, and linen in classic, neutral colors.

CONTACT

A lot of hard work goes into ensuring these patterns are simple to understand and error free. If you get stuck, need extra guidance, or think there may be an error please email hello@kirstenjoel.com and I will connect with you as soon as I can.

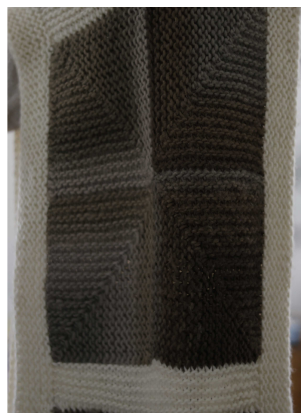
SUBSCRIBE

Enjoyed this pattern? [Subscribe to my newsletter](#) to be the first to know when new designs are launched. I'll also send helpful tips & techniques so that you can connect with your craft and make the most of your knitting practice.

YOU MIGHT ALSO LIKE...



BOLTE
accessories



QUADRAT
accessories



MOLLIS
accessories

kirstenjoel.com

All text, images, & illustrations ©2023 Kirsten Joel
For personal use only